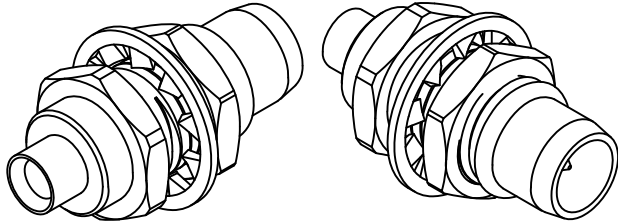
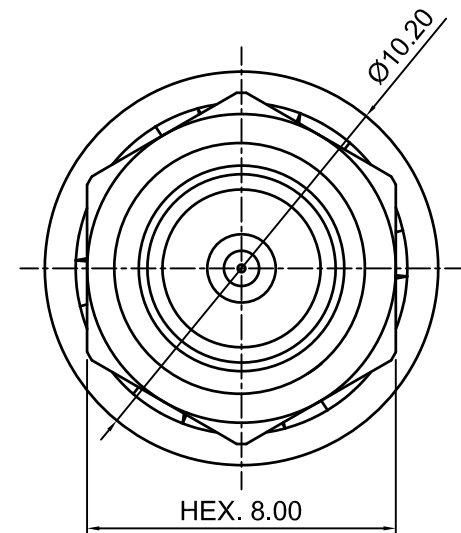
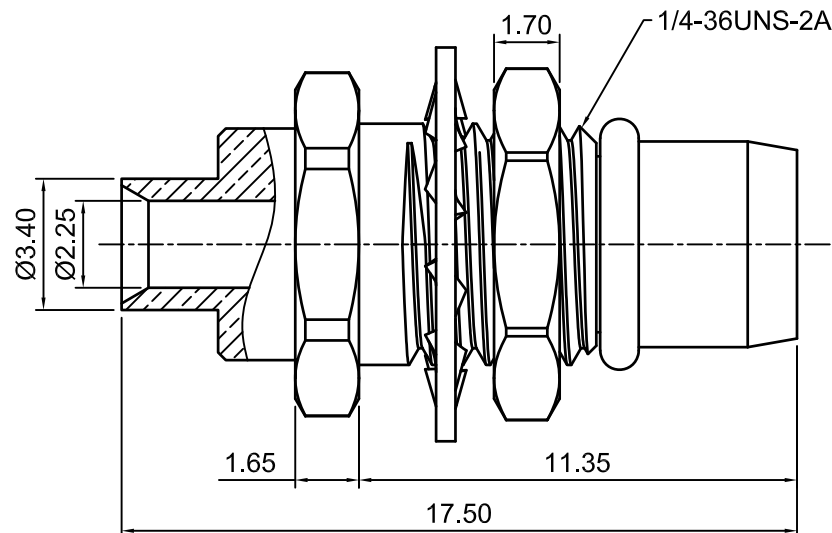
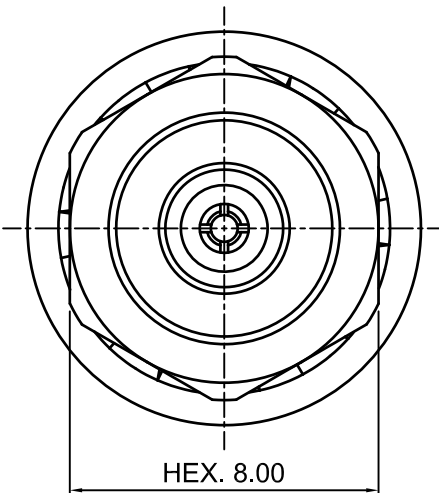
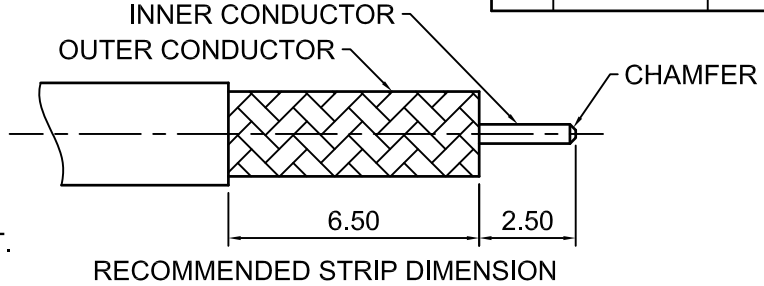


Rev.	ECN#	Description	Changed by	Date
A	NONE	FIRST RELEASE.	M.YANG	2017-06-05

- NOTE:**
1. ELECTRICAL CHARACTERISTICS:
 - 1.1 IMPEDANCE:50Ω
 - 1.2 FREQUENCY RANGE:DC~6GHz
 - 1.3 VSWR: 1.3 MAX.
 2. MECHANICAL CHARACTERISTICS:
 - 2.1 DURABILITY: 500 CYCLES
 - 2.2 TEMPERATURE RANGE: -65°C~+165°C
 3. ALL MATERIALS AND PROCESS ARE RoHS COMPLIANT.



⑥	HEX. NUT	BRASS	GOLD	1EA
⑤	TOOTH WASHER	PHOSPHOR COPPER	GOLD	1EA
④	O-RING	SILICONE RUBBER	NATURAL	1EA
③	INNER CONTACT	BERYLLIUM COPPER	GOLD	1EA
②	INSULATOR	TEFLON	NATURAL	1EA
①	BODY	BRASS	GOLD	1EA
ITEM	NAME	MATERIAL	TREATMENT	QTY

Bill Of Material

TOLERANCES UNLESS OTHERWISE SPECIFIED	
ONE PLACE DECIMAL .X	±0.20
TWO PLACE DECIMAL .XX	±0.10
THREE PLACE DECIMAL .XXX	±0.02
HOLE DIA. VARIATION .XX	N/A
ANGULAR DIMENSION	±3°

Signature	
Approved By:	
Checked By:	
Drawn By:	M.YANG

SHINTO SHINTO ELECTRONICS CO.,LTD
http://www.shinto-electronics.com

Shinto P/N: BMMS20G405-A191	
Description: BMA PLUG BULKHEAD FOR .086 CABLE	
Material: See BOM	Treatment: See BOM
Unit: mm	Size: A4
Scale: 5:1	Sheet: 1 of 1