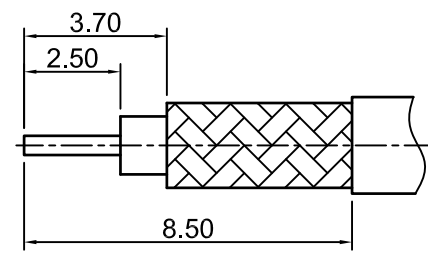


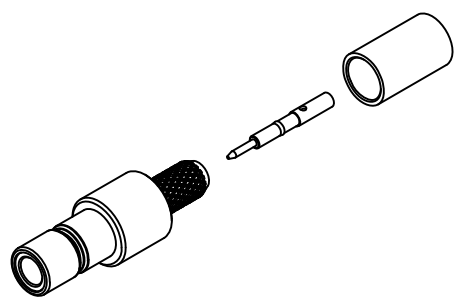
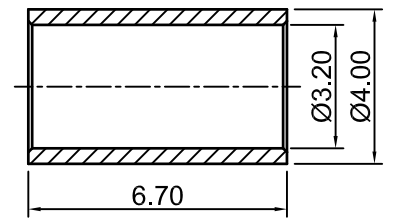
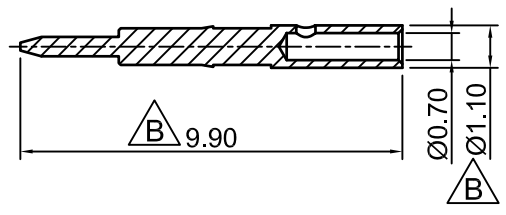
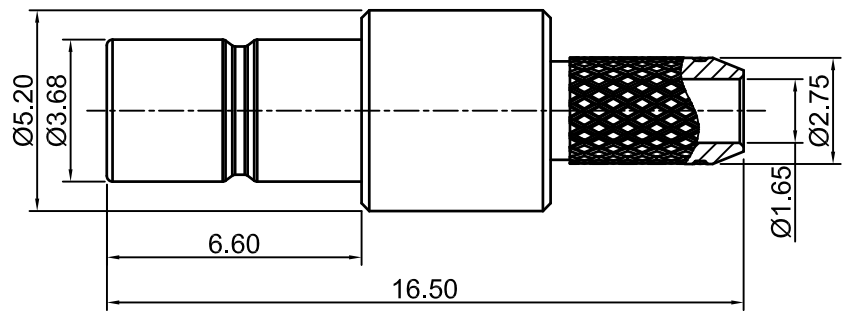
Rev.	ECN#	Description	Changed by	Date
A	NONE	FIRST RELEASE.	M.YANG	2024-11-12
B	NONE	MODIFIED THE CONTACT PIN.	M.YANG	2024-11-19

NOTE:

1. ELECTRICAL CHARACTERISTICS:
 - 1.1 FREQUENCY RANGE:DC~6GHz
 - 1.2 IMPEDANCE:50Ω
 - 1.3 VSWR: 1.3 @ 3GHz
1.5 @ 6GHz
 - 1.4 DIELECTRIC WITHSTANDING VOLTAGE: 1000 VRMS. MIN.
 - 1.5 INSULATION RESISTANCE: 1000MΩ
2. MECHANICAL CHARACTERISTICS:
 - 2.1 MECHANICAL INTERFACE: MIL-STD-34B (SMB PIN CONTACT)
 - 2.2 TEMPERATURE RANGE: -65°C~+165°C
 - 2.3 DURABILITY: 500 CYCLES MIN.
3. ALL MATERIALS AND PROCESS ARE RoHS COMPLIANT.



RECOMMENDED CABLE STRIPPING DIMENSION



④	FERRULE	BRASS	NICKEL	1EA
③	CONTACT PIN	BRASS	GOLD	1EA
②	INSULATOR	TEFLON	NATURAL	1EA
①	BODY	BRASS	GOLD	1EA
ITEM	NAME	MATERIAL	TREATMENT	QTY
Bill Of Material				

TOLERANCES UNLESS OTHERWISE SPECIFIED	
ONE PLACE DECIMAL .X	±0.20
TWO PLACE DECIMAL .XX	±0.10
THREE PLACE DECIMAL .XXX	±0.02
HOLE DIA. VARIATION .XX	N/A
ANGULAR DIMENSION	±3°

Signature	
Approved By:	
Checked By:	
Drawn By:	M.YANG

SHINTO ELECTRONICS CO.,LTD
<http://www.shinto-electronics.com>

Shinto P/N: SMB-P-1.5	
Description: SMB PLUG S/T FOR RG316 CABLE	
Material: See BOM	Treatment: See BOM
Unit: mm	Size: A4
Scale: 5:1	Sheet: 1 of 1